

IHSG 2025 PROGRAM

16-22 NOV 2025



12th International Herbage Seed Group Conference

16-19 November 2025

IHSG 2025 Conference
The Tramsheds Function Centre
Launceston | Tasmania | Australia

19-22 November 2025

Post-Conference Tour
Victoria & New South Wales | Australia



UNIVERSITY of TASMANIA



Tasmanian Institute of Agriculture



Tasmanian
Government

TIA is a joint venture of the University of
Tasmania and the Tasmanian Government

Research with impact

At the Tasmanian Institute of Agriculture, we lead the temperate grasses regeneration program for the Australian Pastures Genebank. This ensures the quality and diversity of pasture species germplasm is preserved for future breeding and research challenges.

Come and chat with our team at our conference booth.

To learn more about our research, visit **utas.edu.au/tia**



Scan here to subscribe
to our newsletter.

CONTENTS

Welcome messages	2
Partners & Sponsors	4
Committees	5
Conference Venue Information	6
CONFERENCE SCHEDULE	7
Day 1 - Sunday 16 November	7
Day 2 - Monday 17 November	8
Day 3 - Tuesday 18 November	13
Day 4 - Wednesday 19 November (Grower Day)	18
Poster presentations	23
POST-CONFERENCE TOUR	24
ACCOMPANYING PERSONS TOUR	31
Delegate list	33
Other information	40

WELCOME MESSAGES

Dear Delegates,

It is my great pleasure to welcome you to the 2025 International Herbage Seed Group Conference here in Launceston, Tasmania. On behalf of the IHSG Committee, I extend a warm greeting to all participants, researchers, industry professionals, growers, and partners, who have joined us from across the globe to share knowledge, foster collaboration, and strengthen our collective future.



This year's conference theme reflects both opportunity and challenge. The herbage seed industry has faced significant financial pressures, rising input costs, and market uncertainties. Yet, these challenges also present a unique chance for innovation and cooperation that can develop solutions to ensure the sustainability and profitability of our industry for years to come.

Over the next four days, you will engage with a program intended to inspire and inform. Our plenary sessions will explore emerging and alternative seed crops, strategies for sustainable production, and the role of technology and innovation in shaping the future of seed systems. We will also address critical issues such as pest management, environmental resilience, and efficiency in production systems.

The conference is not only about technical knowledge, it's about people. IHSG has always been a platform for building relationships, and this year is no exception. From the Welcome Evening to the Main Dinner at the historic Albert Hall, and through our field tours showcasing Tasmania's world-class seed production systems, there will be many opportunities to connect, share experiences, and learn from one another.

I would like to acknowledge the tremendous efforts of our organising partners, the Tasmanian Seed Industry Group, and our sponsors and supporters whose commitment has made this event possible. Your contributions are vital in ensuring that IHSG remains a forum for global dialogue and progress.

As we navigate uncertain economic times, the importance of collaboration cannot be overstated. Together, we can continue to innovate, adapt, and lead. I encourage you to take full advantage of the sessions, discussions, and networking opportunities ahead. Your insights and contributions will help shape the future of our industry.

Thank you for being part of IHSG 2025. I look forward to an engaging and productive conference, and to the ideas and partnerships that will emerge from our time together.

Warm regards,
Richard Chynoweth
President, International Herbage Seed Group

WELCOME MESSAGES

WELCOME TO IHSG 2025

On behalf of the Tasmanian Seed Industry Group I would like to welcome delegates to the 12th International Herbage Seed Group Conference in Launceston, Tasmania.



The Tasmanian Seed Industry Group (TSIG) is the peak body representing the seed industry in Tasmania covering all aspects of the industry from farmers to seed companies, seed cleaners and agronomists in the herbage, cereal and vegetable seed industries.

TSIG started 10 years ago when a group was formed through the Tasmanian Institute of Agriculture to run a conference on herbage seed production to bring new knowledge from around the world to our industry in Tasmania. Speakers included Tom Chastain from Oregon, Richard Chynoweth and Murray Kelley from New Zealand. The aim was also to promote and grow the Tasmanian seed industry. This was successful with the industry more than doubling in size with a number of companies now growing seed in Tasmania. Ten years later we are proud to be organising and hosting the IHSG Conference in Launceston.

The chosen themes of the conference are emerging and alternative seed crops, seed production in a challenging and changing environment, sustainable seed production and agronomic advances, innovation and technology. These topics reflect the changing uses of pasture seed that are occurring now and into the future and hence the need for new and novel seed production practices, particularly with alternate seed crops.

I would especially like to thank all our sponsors for their generous support in difficult times worldwide in the seed industry.

I would also like to thank our small but dedicated committee, for their considerable time and effort since we were awarded the conference in France 2023 and for the advice from the IHSG President Richard Chynoweth and Vice President Nicole Anderson.

Lastly, I would like to thank the TSIG Executive Officer Suzie Maier. At every conference there is usually one person who shoulders most of the work in organising the conference, in this case it's Suzie. Despite this, don't hesitate to talk to her if you have any questions.

Please enjoy the Conference and I'm sure you will take something of value away with you.

Robert Dent, TSIG President



PARTNERS & SPONSORS

ORGANISED BY



PRESENTED BY



PREMIER PARTNER

SUPPORTED BY



SPONSORS



AgriFutures[®]
Pasture Seeds



PARTNERS



**BUSINESS
EVENTS
TASMANIA**

SUPPORTERS

AGF Seeds
Australian Seed Federation
Tasmanian Drought Resilience Adoption and Innovation Hub

COMMITTEES

Organising Committee

Robert Dent

Suzie Maier

Duncan Heazlewood

Bramwell Heazlewood

Tony Butler



Abstract Review Committee

Stuart Smith, Australia

Richard Chynoweth, New Zealand

Phil Rolston, New Zealand

René Gislum, Denmark

Birte Bolte, Denmark

Robert Dent, Australia

Suzie Maier, Australia



IHSG Committee

Richard Chynoweth, New Zealand

Nicole Anderson, Norway

Hannah Rivedal, United States

Pete Berry, United States

René Gislum, Denmark

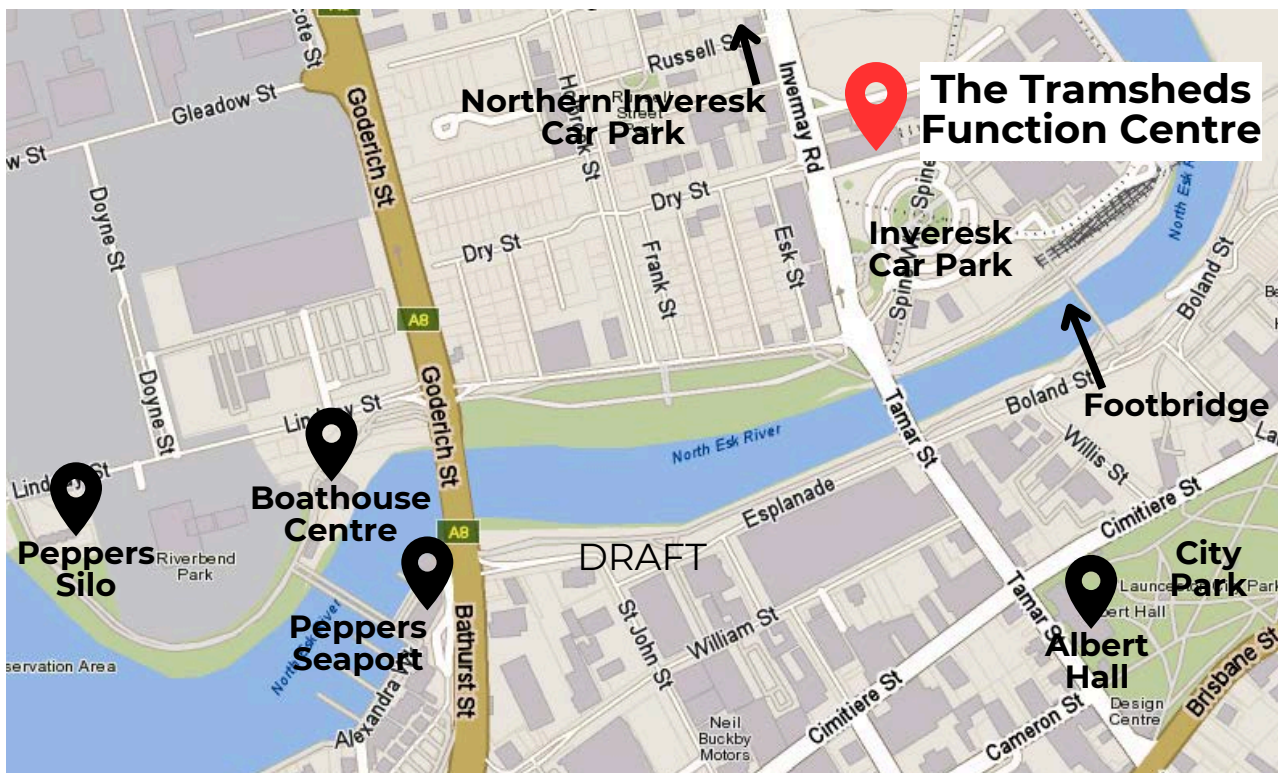
John Fairey, United Kingdom

President
Vice-President
Communications Director
Secretary/Treasurer
Immediate past President
Industry Representative

CONFERENCE VENUE

The Tramsheds Function Centre

4 Invermay Road, Invermay
Tasmania 7248 Australia
www.tramshedslaunceston.com.au



By car

Nearest parking is at the Inveresk Car Park.

AU\$3.00 per hour, Monday-Saturday (9.00 am - 5.00 pm).

Free parking on Sundays.

Additional parking available at the Northern Inveresk Car Park.

By foot

15 min (1.4 km) to Peppers Silo

17 min (1.2 km) to Peppers Seaport

11 min (800 m) to City Park

SCHEDULE

Day 1 - Sunday 16 November

The Tramsheds Function Centre

DOORS OPEN & REGISTRATION		5:30 pm - 6:30 pm
5:30 pm	Registration opens Poster & trade stand set-up IHSG Board Meeting (Tramsheds Board Room)	
WELCOME EVENING		6:30 pm - 9:00 pm
6:30 pm	Opening address <i>IHSG President/TSIG Vice-President</i>	
6:40 pm	Welcome to Country <i>Grant "Tank" Shaw</i>	
6:50 pm	Official Opening <i>Hon. Gavin Pearce MP Minister for Primary Industries and Water, Tasmanian Government</i>	
7:15 pm	Canapés & Networking Drinks	
9:00 pm	Registration Closes	



Photo: www.tramshedslaunceston.com.au

SCHEDULE

Day 2 - Monday 17 November

The Tramsheds Function Centre

DOORS OPEN		8:30 am - 9:00 am
8:30 am	Coffee/tea on arrival Poster viewing	
PLENARY SESSION 1		9:00 am - 10:10 am
Topic	Emerging and alternative seed crops	
Chair	<i>Nicole Anderson, Norway</i>	
9:00 am	Introduction <i>Nicole Anderson - IHSG Vice-President</i>	
9:10 am	Breeding improved cultivars of <i>Chloris gayana</i> (Rhodesgrass) 1988-2025: a case history <i>Donald Loch, Australia</i>	
9:30 am	Cocksfoot seed production: closing date and spring nitrogen response <i>Phil Rolston, New Zealand</i>	
9:50 am	Potential of using grain harvesters to harvest annual medic seeds <i>David Peck, Australia</i>	

SCHEDULE


Day 2 - Monday 17 November

MORNING TEA		10:10 am - 10:40 am
10:10 am	Morning tea Tea / Coffee Poster viewing	
PLENARY SESSION 2		10:40 am - 12:00 pm
Topic	Seed production in a challenging and changing environment	
Chair	<i>Phil Rolston, New Zealand</i>	
10:40 am	A new low coumarin, multi-stem, annual <i>Melilotus albus</i> cultivar for Australia <i>Stan Paynter, Australia</i>	
11:00 am	Insecticide resistance management strategies for the clover seed weevil (<i>Tychius picirostris</i>) in Oregon white clover seed production <i>Navneet Kaur, United States</i>	
11:20 am	Development of devices for mass capture of insect pests in forage legume seed crops <i>Benjamin Coussy, France</i>	
11:40 am	Green on green spot spraying Italian ryegrass in tall fescue grown for seed <i>Carol Mallory-Smith, United States</i>	

SCHEDULE

Day 2 - Monday 17 November

LUNCH		12:00 pm - 1:00 pm
12:00 pm	Lunch Tea / Coffee Poster viewing	
FIELD TOUR 1		1:00 pm - 3:30 pm
Topic	Local Research & Development	
1:00 pm	Depart by bus from The Tramsheds Travel to Cressy, Tasmania	
2:00 pm	Visit to UMS Cressy Research Station <i>Afternoon tea generously provided by UMS</i>	
3:30 pm	Depart by bus from UMS Travel to Brickendon Estate, Cressy, Tasmania	

 <p>ANYSORT www.anysorting.com</p> <ul style="list-style-type: none"> • Conference Delegates are invited to organise a demonstration of the Anysort colour sorter. • Based in Toowoomba, Queensland. • Provide AI color sorting solutions to the seed production industry. • All delegates are invited to visit the showcase factory in Launceston. • Find us on Facebook: facebook.com/anysortaustralia 	<p>UMS www.umseeds.com.au</p> <ul style="list-style-type: none"> • Formally known as Upper Murray Seeds. • Australian family owned Proprietary Seed business, growing and breeding in Australia for over 30 years. • Develop and produce premium forage seed varieties including specialty ryegrasses and • deep-rooted perennials. • New cultivars are tested in replicated trials and working pasture environments at the Cressy Research Station. • Exclusive Australian distribution partner of Germinal Seeds. 	

SCHEDULE

Day 2 - Monday 17 November

CULTURAL ACTIVITY		4:00 pm - 5:30 pm
4:00 pm	Tour of Brickendon Estate	
5:30 pm	Depart by bus from Brickendon Travel to The Boathouse, Launceston, Tasmania	
DINNER		6:30 pm - 9:00 pm
6:30 pm	Dinner at The Boathouse Centre Launceston 55 Lindsay St, Invermay TAS 7248	
9:00 pm	Return to hotels Bus to Peppers Silo/Seaport & The Tramsheds	



<https://brickendon.com.au/>

- UNESCO World Heritage listed Australian Convict Sites World Heritage Property.
- Farmed by the Archer family since land was granted in 1824.
- Irrigated, with seven centre pivots watering approx. 300 hectares of the farm.
- Intensive cropping program including vegetables, poppies and specialist seed and grass crops.
- Also run livestock with around 120 beef cattle and 3000 sheep.



Photo: www.brickendon.com.au

NOTES

Day 2 - Monday 18 November

[illegible]

SCHEDULE

Day 3 - Tuesday 18 November

The Tramsheds Function Centre

DOORS OPEN		8:30 am - 9:00 am
8:30 am	Coffee/tea on arrival Poster viewing	
PLENARY SESSION 3		9:00 am - 10:10 am
Topic	Sustainable seed production	
Chair	<i>Meredith Mitchell, Australia</i>	
9:00 am	Sustainable management strategies for the seed gall nematode parasitizing annual ryegrass seed in Oregon <i>Hannah Rivedal, United States</i>	
9:20 am	A pursuit of crop rotational efficiency in perennial herbage seed crops-based cropping systems <i>Nityananda Khanal, Canada</i>	
9:40 am	Alternative harvesting practices in western Oregon grass seed production systems <i>Clint Mattox, United States</i>	
10:00 am	Poster introductions	
MORNING TEA		10:10 am - 10:50 am
10:10 am	Morning tea Tea / Coffee Poster viewing	

SCHEDULE

Day 3 - Tuesday 18 November

PLENARY SESSION 4		10:50 am - 12:00 pm
Topic	Sustainable seed production (continued)	
Chair	<i>John Fairey, United Kingdom</i>	
10:50 am	Can a fungal volatile organic compound mitigate abiotic and biotic stress impacts in perennial ryegrass grown for seed production? <i>John Hampton, New Zealand</i>	
11:10 am	Assessing environmental drivers of insect pests in grass seed crops to develop areawide decision support tools <i>Seth Dorman, United States</i>	
11:30 am	Presentation - Anysort	
11:35 am	Occurrence and management of aphid-vectored yellow dwarf viruses in perennial grass seed crops <i>Nicole Anderson, United States</i>	
LUNCH		12:00 pm - 1:30 pm
12:00 pm	Lunch Tea / Coffee Poster viewing	
12:30 pm	IHSG General Meeting of Members	

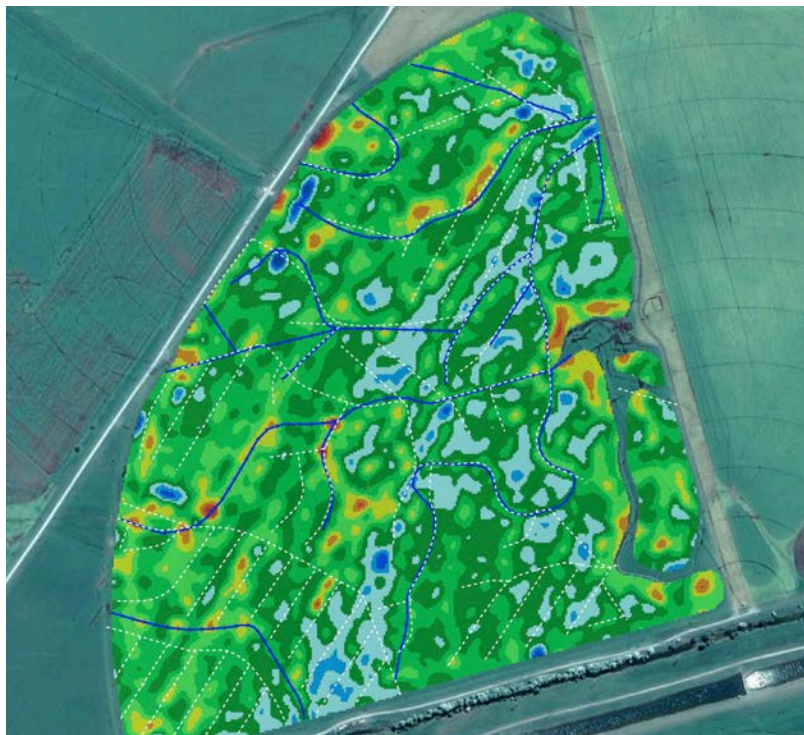
SCHEDULE

Day 3 - Tuesday 18 November

FIELD TOUR 2		1:30 pm - 5:00 pm
Topic	Intensive seed production	
1:30 pm	Depart by bus from The Tramsheds Travel to Cressy, Tasmania	
2:15 pm	Visit to Greenvale Pastoral <ul style="list-style-type: none"> • Chicory seed crop • Ryegrass seed crop • Dr Cameron Spurr, SeedPurity - Pollination • Knuckey 'Multi Row' Pickup front <i>Afternoon tea generously provided by Knuckey</i>	
4:30 pm	Depart by bus from Greenvale Pastoral Return to Peppers Silo/Seaport & The Tramsheds	

Greenvale Pastoral Annual Ryegrass 2022 Harvest Seed Yield Map

As presented at the 11th International Herbage Seed Group Conference, France



Paddock average
4.72 tonne clean
seed per hectare

Uncleaned yield (t/ha)

<= 3.4	Red
3.4-3.8	Red
3.8-4.2	Orange
4.2-4.6	Yellow
4.6-5.0	Light Green
5.0-5.5	Green
5.5-5.9	Dark Green
5.9-6.3	Light Blue
6.3-6.7	Blue
6.7-7.1	Dark Blue
>7.1	Dark Blue

SCHEDULE

Day 3 - Tuesday 18 November

FREE TIME		5:30 pm - 7:00 pm
5:30 pm	Free time	
MAIN DINNER		7:00 pm - 10:00 pm
7:00 pm	Dinner at The Albert Hall 47 Tamar St, Launceston TAS 7250 <ul style="list-style-type: none">• Enter via City Park Cimitiere Street	
9:50 pm	Depart by bus from The Albert Hall Return to Peppers Silo/Seaport & The Tramsheds	

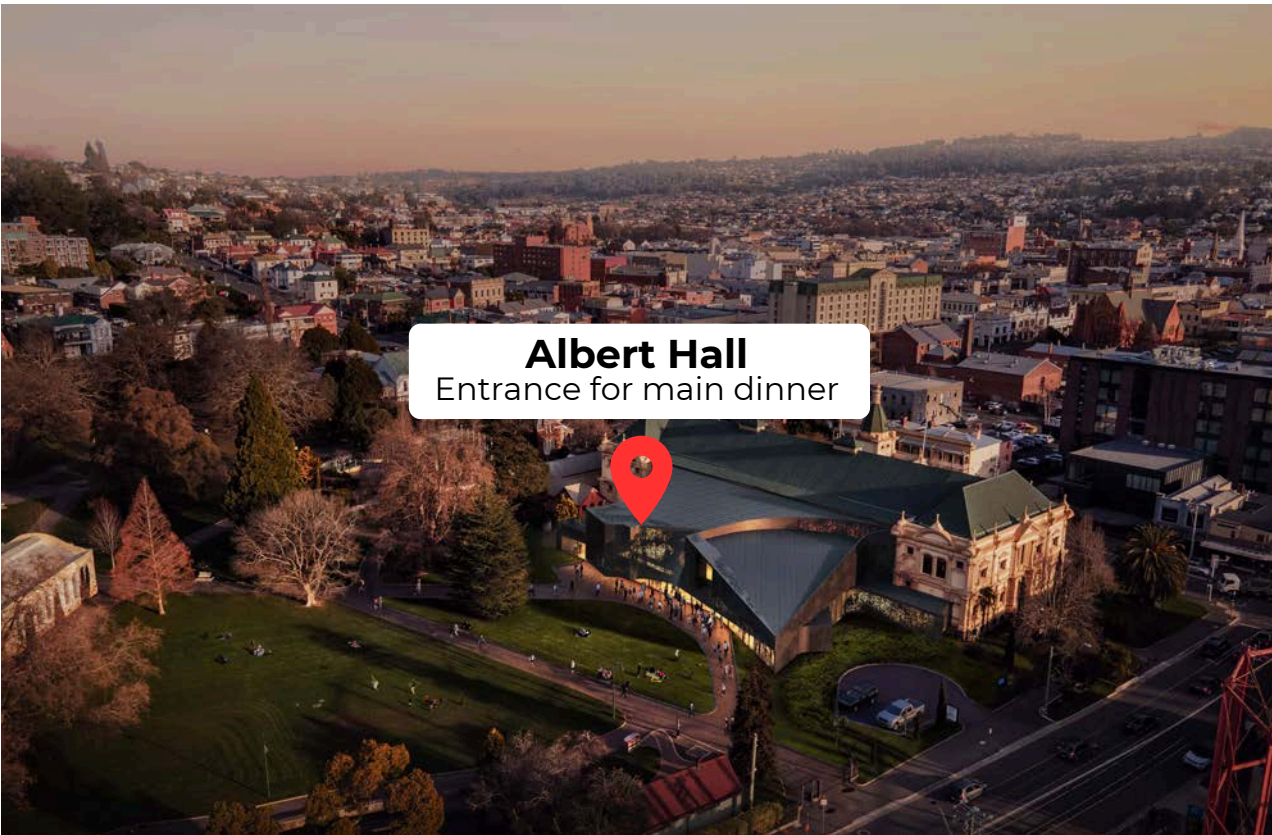


Photo: www.launceston.tas.gov.au

NOTES

Day 3 - Tuesday 18 November

[illegible]

SCHEDULE

Day 4 - Wednesday 19 November GROWER DAY

The Tramsheds Function Centre

DOORS OPEN		8:30 am - 9:00 am
8:30 am	Grower Day Registration Coffee/tea on arrival Poster viewing Bag drop-off for Post-Conference Tour	
PLENARY SESSION 5		9:00 am - 10:10 am
Topic	Agronomic advances, innovation & technology	
Chair	<i>Rohan Wardle, Australia</i>	
9:00 am	Opening remarks	
9:10 am	Seed packaging bag types - impact on endophyte viability and seed quality in perennial ryegrass during storage <i>Aung Thant, New Zealand</i>	
9:30 am	The Grady Sensor: determining seed moisture content in seconds <i>Jing Zhou, United States</i>	
9:50 am	Irrigation responses of perennial ryegrass seed crops in New Zealand <i>Richard Chynoweth, New Zealand</i>	

SCHEDULE

Day 4 - Wednesday 19 November GROWER DAY

MORNING TEA		10:10 am - 10:40 am
10:10 am	Morning tea Tea / Coffee Poster viewing	
PLENARY SESSION 6		10:40 am - 12:00 pm
Topic	Agronomic advances, innovation & technology (continued)	
Chair	<i>Richard Chynoweth, New Zealand</i>	
10:40 am	Reducing grass seed cleaning loss by improving combine setups <i>Chris Smith, New Zealand</i>	
11:00 am	Trinexapac-ethyl and spring nitrogen effects on orchardgrass [cocksfoot] seed development <i>Mohammed Morad, Kuwait</i>	
11:20 am	Understanding yield limitations in New Zealand red clover seed crops <i>Sean Weith, New Zealand</i>	
11:40 am	Forage chicory seed production – An update of techniques in New Zealand and Tasmania <i>Murray Kelly, New Zealand</i>	

SCHEDULE

Day 4 - Wednesday 19 November GROWER DAY

LUNCH		12:00 pm - 1:00 pm
12:00 pm	Lunch Tea / Coffee Poster viewing	
FIELD TOUR 3		1:30 pm - 5:00 pm
Topic	Agronomic advances, innovation & technology	
1:00 pm	Depart by bus from The Tramsheds Travel to Oaks, Tasmania	
1:30 pm	Visit to Ardent Seeds Tasglobal Seeds	
2:10 pm	Depart by bus from Ardent Seeds Travel to Tasmanian Seed Dressing & Storage Co.	

Ardent Seeds | Tasglobal Seeds

www.tasglobalseeds.com

Specialising in alternative pasture species



Coloured brome
'Exceltas'
Bromus coloratus Steud.



Purple vetch
'Benetas'
Vicia benghalensis



Pink Serradella
'Serratas'
Ornithopus sativus

SCHEDULE

Day 4 - Wednesday 19 November GROWER DAY

FIELD TOUR 3 (continued)		1:30 pm - 5:00 pm
2:15 pm	<i>Afternoon tea generously provided by Tasmanian Seed Dressing & Storage Co. (TSDS) and Allegiant Milling and Processing Solutions</i>	
2:45 pm	Depart TSDS	
2:50 pm	Visit to Melton Vale Pastoral	
4:00 pm	Depart by bus from Melton Vale Pastoral Return to The Tramsheds Post-conference tour attendees depart by bus for Spirit of Tasmania, Devonport terminal	
5:00 pm	End of IHSG Conference	

Melton Vale Pastoral

- Sixth generation, farmed by the Heazlewood family since 1854, harvesting pasture seeds since the 1930's.
- Yields in perennial ryegrass to 3156 kg/ha, white clover to 1152 kg/ha, chicory to 1244 kg/ha.
- 700 mL annual rainfall, 550 ha can be irrigated using nine pivots with 1200 ML of water available.
- 700 hectares livestock and cropping enterprise. Diverse range of crops, including grass seed, clover seed, seed canola, and chicory seed, as well as beans, peas, onions, poppies, potatoes and pyrethrum.
- 2,500 commercial ewes, finishing prime lambs, 50 beef cows.



Photo: B. Heazlewood

NOTES

Day 4 - Wednesday 19 November



POSTER PRESENTATIONS

Vegetative growth and seed production of endophyte-free and endophyte-infected tall fescue plants under defoliation conditions

Lucas Petigrosso, María Echeverría, Jorge Castaño & Osvaldo Vignolio

Impact of storage duration on fungal contamination and mycotoxin accumulation in forage oat seeds

Guiqin Zhao, Jikuan Chai, Kuiju Niu & Liang Zeng

Modelling the development stages of alfalfa seed production to anticipate the impacts of climate change

Henri Gorioux, Coraline Ravenel & Serge Bouet

Increasing seed yield potential of Tasmanian white clover seed production crops

Suzie Maier & Robert Dent

Advancing proprietary seed production through independent forage evaluation in Australia

Tony Butler, Damien Adcock, Richard Prusa, Josh Collins & Fergus Brown

Development of a tool for automatically counting insect pests in alfalfa seed crops

Benjamin Coussy, Rayane Jaffal, David Rousseau & François Deneufbourg

Foxtail barley resistance to quizalofop-p-ethyl in Peace Region creeping red fescue seed fields

Calvin Yoder, Charles Geddes & Doug Fehr

Can aerial imagery be used to quantify yield losses in vole infested tall fescue fields?

Christy Tanner

Classification of grass seed crop species using spaceborne imagery and Artificial Intelligence-driven models

Jing Zhou, Qianyi Duan & Nicole Anderson

Increasing ryegrass seed yields and returns for growers using biostimulants

Julie Finnigan & Matthew Kleinig

Overseeding a forage crop in established alfalfa: which impacts on weeds and seed production?

Serge Bouet & Mael Quemar

Genome-wide association analysis of drought tolerance traits in alfalfa and functional validation of the candidate gene

Tianning Fang, Nan Song, Bao Ao & Jiyu Zhang

POST-CONFERENCE TOUR

SCHEDULE

DAY 4 - WEDNESDAY 19 NOVEMBER

- | | |
|---------|---|
| 4:00 pm | Depart by bus from Melton Vale Pastoral
Travel to Spirit of Tasmania, Devonport terminal |
| 5:00 pm | Check-in and embark
Dinner and accommodation on-board |

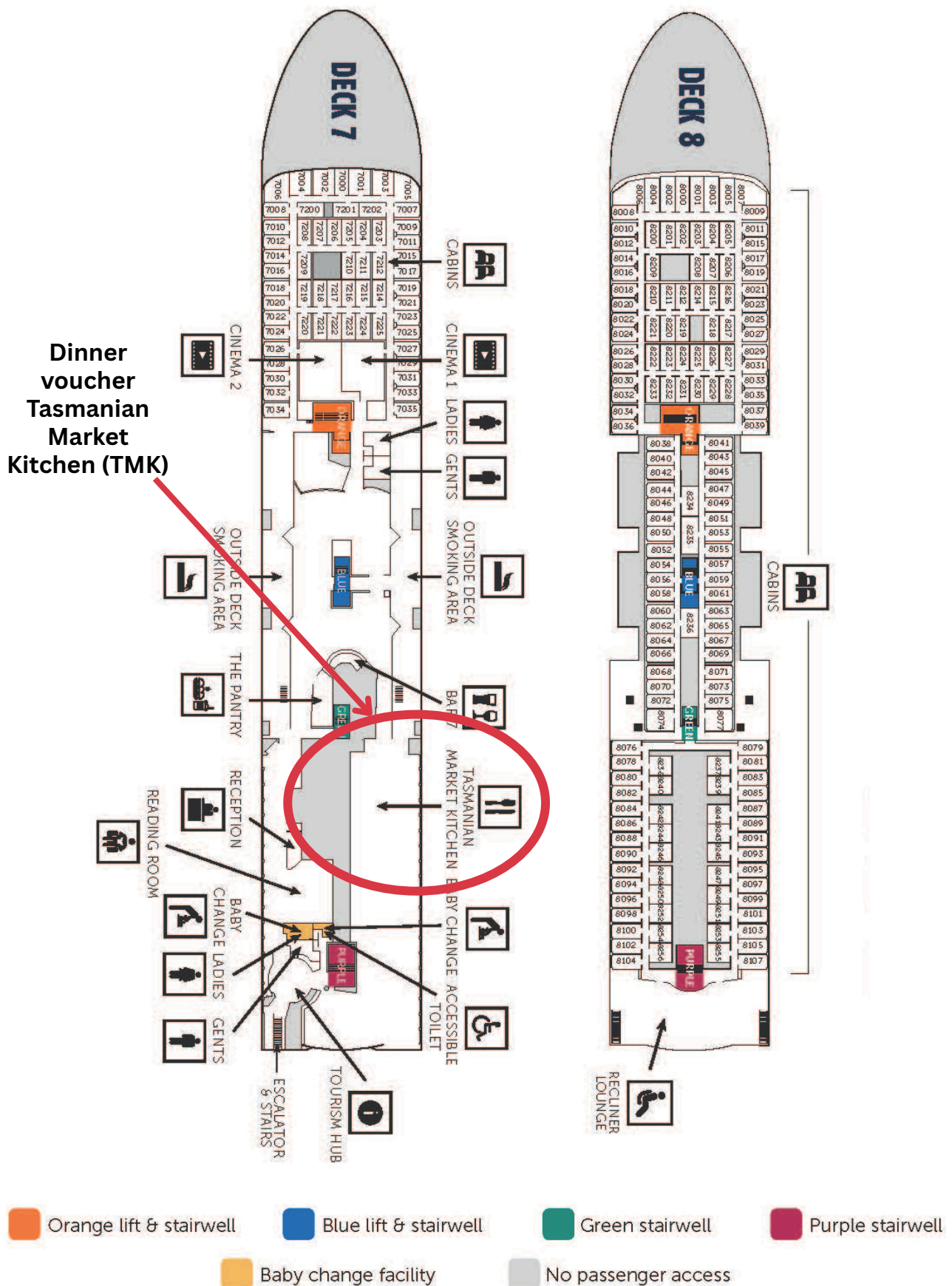
www.spiritoftasmania.com.au

- Buffet dinner at Tasmanian Market Kitchen (TMK) + non-alcoholic drink.
- Overnight accommodation in cabin.
- Check in two bags or suitcases and take one carry-on bag or suitcase on board.
- Carry-on baggage allowance is one medium bag or suitcase with the maximum dimensions of 66cm x 46.5cm x 27.5cm. No weight restrictions apply.
- Carry-on must include personal toiletries, medication (including sea sickness medication if needed) and clothing. Other luggage must remain in your check-in baggage for the duration of the journey.



Photo: www.spiritoftasmania.com.au

POST-CONFERENCE TOUR



POST-CONFERENCE TOUR

SCHEDULE

DAY 5 - THURSDAY 20 NOVEMBER

- | | |
|---------|---|
| 6:30 am | Disembark Spirit of Tasmania, Geelong terminal
Board buses
Breakfast & toilet stop
Travel to Leigh Creek |
| 9:00 am | Visit to DLF Seeds
<i>Morning tea and lunch generously provided by DLF Seeds</i> |
| 1:00 pm | Travel to Smeaton, Victoria |

DLF Seeds

www.dlfseeds.com.au

- Providing Australian farmers with high quality, innovative forage seed varieties for over 85 years.
- Largest proprietary forage seed company in Australia.
- Investment of over AU\$15 million per annum into Research & Development across Australia and New Zealand.
- Comprehensive trial sites across dryland and temperate locations including, Armidale, Gatton, Leigh Creek, Lismore, Maryborough, Scone, Mangoplah, Shepparton, Terang, Traralgon and Wagga Wagga.
- Purpose built cold storage facilities to ensure endophyte percentages are maintained.
- Play a leading role in the development of improved pasture plant genetics in Australia.

AGF Seeds

www.agfseeds.com.au

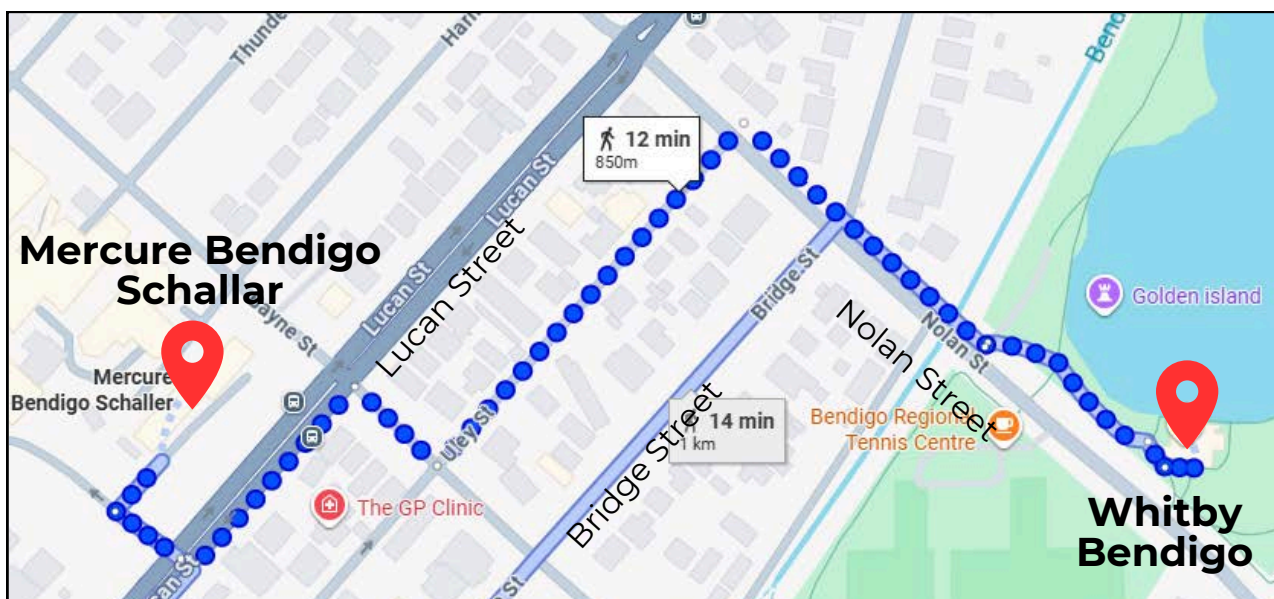
- Australian Owned for Australian Farmers.
- AGF Seeds bring together the best genetics from international and domestic breeders as well as breeding their own varieties such as 'Prodigy' annual Italian ryegrass.
- All varieties are tested and proven in local conditions.
- Main trial site is located in Smeaton, Victoria and contains 100's of plots of cereals, forage, and pasture testing a range of different factors including yield, dry matter produced, fungicide variations, sowing dates.
- Varieties further tested before release across Australian conditions using independent trial organisations such as FAR Australia, NVT, and PTN.

POST-CONFERENCE TOUR

SCHEDULE

DAY 5 - THURSDAY 20 NOVEMBER (continued)

1:30 pm	Visit to AGF Seeds <i>Afternoon tea generously provided by AGF Seeds</i>
3:30 pm	Travel to Bendigo, Victoria
5:00 pm	Arrive at Mercure Bendigo Schallar 60 Lucan St, Bendigo VIC 3550 <ul style="list-style-type: none">• Check-in• Free time
6:30 pm	Dinner - Whitby Bendigo 28 Nolan St, Bendigo VIC 3550
9:00 pm	Return to accommodation



POST-CONFERENCE TOUR

SCHEDULE

DAY 6 - FRIDAY 21 NOVEMBER	
From 6:30 am	Breakfast at Mercure Bendigo Check-out by 8:15 am
8:30 am	Travel to Inglewood, Victoria
9:15 am	Cultural visit - Eucalyptus Distillery Museum
10:30 am	Travel to Shepparton, Victoria
12:30 pm	Visit to RAGT Australia Lunch generously provided by RAGT Australia
1:15 pm	Travel to Howlong, New South Wales

Eucalyptus Distillery Museum

www.eucymuseum.com.au

- Volunteer run
- Home of the Blue Mallee Eucalyptus (*Eucalyptus polybractea*).
- Heritage listed distillery.
- Informative talk and a demonstration of eucalyptus oil production in model distillery.



Photo: www.alo.com.au

RAGT Australia

www.ragt.au

- Multi species global seed business with a history spanning more than 100 years.
- Seed wholesaler within Australia, screening and supplying premium cultivars.
- Active in several Australian industry segments including broadacre cereals, temperate pasture, canola, forage crops, forage cereals and soil health crops.
- Plant breeding based on great genetics teamed with high production and quality.
- Present in more than 50 countries, 5 continents, RAGT is the European leader in cereals and protein-rich species.

POST-CONFERENCE TOUR

SCHEDULE

DAY 6 - FRIDAY 21 NOVEMBER	
3:15 pm	Visit to Barenbrug Australia Research Farm <i>Afternoon tea generously provided by Barenbrug</i>
5:30 pm	Travel to Albury, New South Wales
6:00 pm	Arrive Mantra Albury 524 Smollett St, Albury NSW 2640 <ul style="list-style-type: none">• Check-in• Free time
7:30 pm	Dinner - Mantra Albury

Barenbrug Australia

www.barenbrug.com.au

- The Royal Barenbrug Group is a family-owned business originating in The Netherlands and has proudly celebrated its 120th anniversary last year in 2024. Barenbrug Australia is one of over 20 global operating companies supporting the Barenbrug global business.
- Barenbrug Australia specialises in research and development (R&D), marketing, extension and distribution of proprietary pasture seeds, forage seeds, cropping, turf and seed enhancement technology. Barenbrug have proudly supplied quality seed to farmers, green keepers and international customers with high performance products for over 30 years.
- We invest ~AU\$6 million annually towards the research, development and commercialisation of new varieties and cultivars. Our strong R&D focus sets us apart, with significant programs being conducted at our facilities in Queensland, Southern NSW and Eastern Victoria.
- "Shrublands" Southern Research Facility
 - Just outside the town of Howlong, southern New South Wales
 - 70-hectare flagship research facility
 - 580 mm rainfall, winter dominant
 - Alluvial red-brown silty clay soil type, pH: 5.4-5.6
 - Dedicated to the research, development and breeding of temperate species to provide farmers with high performance products to improve productivity and maximise profitability.
 - Key focus on measuring the performance, reliability and broad adaptation of new varieties, whilst capturing critical data and technical information.

POST-CONFERENCE TOUR

SCHEDULE

DAY 7 - SATURDAY 20 NOVEMBER

From	Breakfast at Mantra Albury
6:30 am	Check-out by 8:45 am
9:00 am	Travel to Corowa, New South Wales
9:50 am	Visit to Corowa Seeds Lunch
1:00 pm	Travel to Rutherglen, Victoria
1:30 pm	Visit to Baker Seed Co.
3:30 pm	End of Post-Conference Tour Depart Rutherglen for <ul style="list-style-type: none">• Mantra Albury• Tullamarine Airport

Corowa Seeds

www.corowaseeds.com.au

- Mid-sized broad acre farming business, including lucerne (*Medicago sativa*) and sub clover (*Trifolium subterraneum*).
- Commercial scale high-quality pasture seed production and breeders seed multiplication.
- In house processing and packaging to OECD standards.
- Winter and summer cropping.
- Multiple centre pivot sites (underground and river water) across a range of soil types.

Baker Seed Co.

www.bakerseedco.com.au

- Wholly Australian, family owned business, producing and processing seed for 4 generations.
- Cereals, oilseeds, pastures, legumes and pulses.
- State of the art coating facilities and high capacity packing line.
- Sister company Lilliput AG farm 2500 ha; 300 ha is pasture for seed production & prime lamb grazing.
- Average 590 mm rainfall per annum, with ~400 mm in the March-November growing season.

ACCOMPANYING PERSONS TOUR

SCHEDULE

SUNDAY 16 NOVEMBER		5:30 pm - 9:00 pm
5:30 pm	Registration opens The Tramsheds Function Centre	
6:30 pm	Conference opening & welcome evening with Delegates	
9:00 pm	Registration Closes Return to hotels	
MONDAY 17 NOVEMBER		9:30 am - 9:00 pm
9:30 am	Meet at City Park - Japanese Macaque Exhibit Guided walking tour of Launceston Visit to Cataract Gorge Lunch at Basin Café	
2:30 pm	'Lady Launceston' Cataract Gorge Adventure Cruise, departing from Home Point	
3:30 pm	Return to hotels Free time	
6:30 pm	Dinner with Delegates at The Boathouse Centre	
9:00 pm	Return to hotels	

ACCOMPANYING PERSONS TOUR

TUESDAY 18 NOVEMBER		9:30 am - 10:00 pm
9:30 am	Meet at The Tramsheds Function Centre	
	Visit to Bridestowe Estate Lavender farm	
	<ul style="list-style-type: none"> • Tour • Morning tea 	
1:00 pm	Lunch at Nadine's at Pipers Brook Vineyard	
	Gentle stroll to Lilydale Falls	
4:00 pm	Return to hotels Free time	
7:30 pm	Main Dinner with Delegates at The Albert Hall	
10:00 pm	Return to hotels	
WEDNESDAY 19 NOVEMBER		9:30 am - 4:00 pm
9:30 am	Meet at The Tramsheds Function Centre	
	Visit to Platypus House, Beauty Point	
12:00 pm	Travel from Beauty Point to Deloraine	
	Lunch at Deloraine Deli	
	Visit to 'Yarns Artwork in Silk' presentation <u>OR</u> wander down the hill or along the river walk	
3:30 pm	Meet at the Deloraine Train Park	
	Travel to meet delegates at Whitemore	
4:00 pm	Swap buses for Post-Conference Tour	
	Travel to Spirit of Tasmania	

DELEGATE LIST

ARGENTINA

Jorge Alberto Castaño Los Prados Italia SRL

AUSTRALIA

Amy La	AgriFutures Australia
Andrew Speirs	Meridian AG
Anthony Quilter	DLF Seeds
Bill Fuller	AgriFutures Pasture Seeds Advisory Panel
Bramwell Heazlewood	Seeds Management Pty Ltd
Brenton Heazlewood	Heazlewood Seeds Pty Ltd
Caitlyn Badcock	DLF Seeds
Chris Cheek	Blue Gum Ag Consulting
Cohen Davie	NRE Tas – Tasmanian Seed Services
Damon Zhang	Anysort
Daryl Turner	Barenbrug Australia Pty Ltd
Dave Bell	Midlands Seed Ltd
David Peck	SARDI
David Squibb	AlfaGen Seeds
Dean Madsen	Valley Seeds Pty Ltd
Delegate 1	Department of Natural Resources & Environment, Tasmanian Government
Delegate 2	Department of Natural Resources & Environment, Tasmanian Government
Donald Loch	The University of Queensland, St Lucia Campus
Duncan Heazlewood	Heazlewood Seeds Pty Ltd
Dylan Brodie	Naracoorte Seeds
Emily Double	Nutrien
Gary Martin	DLF Seeds
Geoff Dell	RAGT Australia
Graham Girdwood	RAGT Australia

AUSTRALIA (continued)

Hannah Cummins	Ben Lomond Agriculture
Henry Smith	Cressy House
Hugh Palmer	AgriFutures Australia
Jess Nottle	DLF Seeds
John Heard	Formosa Estate Pty Ltd
Julie Finnigan	Muirs
Lachlan Godson	Agrimix Pty Ltd
Les Baxter	Tasmanian Institute of Agriculture
Long Tang	Anysort
Mark Kester	AgriFutures Pasture Seeds Advisory Panel
Marty Toohey	DLF Seeds
Matthew Kleinig	Muirs
Meredith Mitchell	AgriFutures Pasture Seeds Advisory Panel
Peter Gibbs	AlfaGen Seeds
Pip Connolly	AgriFutures Australia
Robert Dent	Ardent Seeds
Rohan Dingemanse	Barenbrug Australia Pty Ltd
Rohan Wardle	DLF Seeds
Rosie James-Burk	Muirs
Rowan Smith	Tasmanian Institute of Agriculture
Sam Croser	Green Acres Farming
Stacey Lawrence	AgriFutures Australia
Stan Paynter	Selected Seeds
Stewart Sutherland	UMS
Stuart Smith	-
Suzie Maier	Tasmanian Seed Industry Group (TSIG)
Thomas Dwyer	Nutrien
Tony Butler	Pasture Trial Network

CANADA

Calvin Yoder	Peace Region Forage Seed Association
Daniel Limoges	Limoges Forage & Grasses Ltd
Ken Gagnon	Clouston Creek Farm Ltd
Nityananda Khanal	Agriculture and Agri-Food Canada
Talon Gauthier	Peace Region Forage Seed Association

CHINA

Guiqin Zhao	Gansu Agricultural University
Jikuan Chai	Gansu Agricultural University
Jiyu Zhang	Lanzhou University
Tianning Fang	Lanzhou University

DENMARK

Anders Thue Jentoft Tobiasen	DSV Frø Danmark A/S
Carl Høj Laursen	Seges, Denmark
Jørn Lund Kristensen	DLF Seeds A/S
Klaus Kristensen	Hovergaarde
Niels Arne Vad	Danish Seed Growers
Nils Elmegaard	Danish Seed Council
Peter Buhl	Hvilestedgaard
Peter Krog-Meyer	Freudenberger
Søren Christensen	Danish Seed Growers
Stig Oddershede	DLF Seeds A/S
Svend Møller	Svendstrup Hyllegård
Thomas Holst	Danish Seed Growers
Thor Gunnar Kofoed	Danish Seed Council
Troels Prior Larsen	Danish Seed Growers
Ulrik Lunde	Pellesminde

FRANCE

Arnaud Heirman	SEMAE
Benjamin Coussy	FNAMS

FRANCE (continued)

Jean-françois Chamaillard	LANDSEM
Laurent Michel	SEMAE
Rémi Labat	RAGT Semences
Serge Bouet	FNAMS

GERMANY

Joachim Huetter	Deutsche Saatveredelung AG
Tobias Gruss	Deutsche Saatveredelung AG

KUWAIT

Mohammed Morad	Kuwait University
----------------	-------------------

NEW ZEALAND

Alice Keir	PGG Wrightson Seeds Ltd
Andrew Pitman	Foundation for Arable Research
Aung Thant	Lincoln University
Bede McCloy	NZ Arable
Ben Harvey	Foundation for Arable Research
Fiona Anderson	Foundation for Arable Research
Gerard Scott	Grower
Graeme Lill	GW and MC Lill Ltd
Guilherme Barcellos	PGG Wrightson Seeds Ltd
Ivan Lawrie	SIRC Seed Industry Research Centre NZ
John Hampton	Lincoln University
John McCaw	McCaw Seeds
Mark Currie	PGG Wrightson Seeds Ltd
Mark O'Hara	NZ Arable
Millie Calder	PGG Wrightson Seeds Ltd
Murray Kelly	PGG Wrightson Seeds Ltd
Owen Gibson	Foundation for Arable Research
Phil Rolston	SIRC Seed Industry Research Centre NZ
Richard Chynoweth	MRB

NEW ZEALAND (continued)

Richard Merrilees	Barenbrug
Ronald Hydes	Rosa Fields Ltd
Samantha Williams	Barenbrug
Sean Mulligan	PGG Wrightson Seeds Ltd
Sean Weith	Foundation for Arable Research
Shane Butler	PGG Wrightson Seeds Ltd
Tony Henderson	Cairnbrae Seed Ltd
Will Mitchell	PGG Wrightson Seeds Ltd

NORWAY

Nicole Anderson	Norwegian Institute of Bioeconomy Research
-----------------	--

SOUTH KOREA

Joungkyong Lee	DRS
----------------	-----

SWEDEN

Jörgen Persson	SFO, Sveriges Frö och Oljeväxtodlare (Swedish Seed and Oilseed Growers)
Mattias Hansson Hammarstedt	HIR Skåne, Absolut Farmers

UNITED KINGDOM

Christine Hill	R W Hill Farms Ltd
David Hill	R W Hill Farms Ltd
Dick Hall	CA & BA Hall
Grace Welling	Germinal GB Ltd
John Fairey	Germinal GB Ltd
Mark Whittal	E & E Whittal & Son
Richard Monk	A F Monk Rookley Ltd
Robert Salmon	N E Salmon Ltd
Sebastian Blanch	Barenbrug UK Ltd
Tom Paybody	RJ Paybody and Sons

UNITED STATES

Bob VanderZanden	LSV Farm
Carol Garbacik	Oregon State University

UNITED STATES (continued)

Carol Mallory-Smith	Oregon State University
Christy Tanner	Oregon State University
Clint Mattox	USDA-ARS Forage Seed and Cereal Research Unit
Darrin Walenta	OSU Extension Service Union Co.
Hannah Rivedal	USDA-ARS Forage Seed and Cereal Research Unit
Jing Zhou	Oregon State University
Joan Campbell	University of Idaho
Navneet Kaur	Oregon State University
Seth Dorman	USDA-ARS Forage Seed and Cereal Research Unit

URUGUAY

Ana Cecilia Fáber Díaz	INIA - Uruguay
David Rochón	DLF Seeds

GROWER DAY - AUSTRALIA

Alex Burbury	Pinion Advisory
Ashley Ling	Botanical Resources Australia
Brett Davey	Southern Farming Systems
Carl Rodger	Burlington Farming Pty Ltd
Clara Tole	Ben Lomond Agriculture
David Cowle	UMS
Ed Keach	Keach Pastoral
Emily Steadman	Botanical Resources Australia
Hugh Bradley	WarringtonAg
Jill Lyall	Bejo Australia Pty Ltd
Josh Collins	Australian Seed Federation
Kally Bushby	Bejo Australia Pty Ltd
Konrad Chung	Midlands Seed Ltd
Lauchlan Cole	Elansco Pty Ltd
Lily Fisher	WarringtonAg
Mathew Dent	Mount View Enterprises

GROWER DAY - AUSTRALIA (continued)

Nicholas Broadfield

Paul Taylor

Rebecca Evans

Richard Prusa

Rob Bradley

Rob Tole

Robin Tait

Rohan Borojevic

Stephen Pearn

Stuart Coles

Tim Smallbon

Tom Graesser

Botanical Resources Australia

P&K Taylor

Agronsure

RAGT Australia

WarringtonAg

Greenvale Pastoral

Farm Ecologist

TAS Farm Innovation Hub

Fairlea

Ben Lomond Agriculture

UMS

Ben Lomond Agriculture



ANYSORT

LEADING AI SORTING SOLUTIONS AND SUSTAINABLE VALUE CHAINS

300+
Technical service engineers

100+
Core patented technologies

100+
Customer service centers

ANYSORT AUSTRALIA

+61 413930006

Rain@ahjiexun.com

OTHER INFORMATION

DRESS CODE

Casual	Daytime - with sensible shoes and sun protection for field tours
Smart casual	Welcome evening (Sunday 16 November) Main dinner (Tuesday 18 November)

PHONE NUMBERS

Taxi	Taxi Combined	131 008 or 132 227
	Uber	13 82 37
Emergency	Ambulance	000
	Fire	000
	Police	000
	Police (non-emergency)	131 444

INTERNET ACCESS AT THE CONFERENCE VENUE

Username	Tramshed Guest
Password	4invermay

POST-EVENT SURVEY

All delegates are invited to complete the post-event survey by 31 November.

Your feedback is confidential and will help improve future ISHG Conferences.



SCAN TO WIN!

Go into the draw to win
AUD\$500 VISA gift card!

Your event is making a difference. The Tasmanian State Government supports the business event industry and values your contribution to our local economy.

Please help us continue to build and understand the broader value of business events by filling in this short survey.



SEE CLEAR HERE

**BUSINESS
EVENTS
TASMANIA**

Terms: The promoter is Business Events Tasmania (ABN 33009589584). Entries open on the first Monday of each quarter and close on the last Friday of each quarter (March, June, September, December). Entry is restricted to Australian, non-Tasmanian residents attending a business event. Prize will be awarded randomly. See long form T&Cs for all details.

Image: Studio Hubert





12th International Herbage Seed Group Conference

LAUNCESTON | TASMANIA | AUSTRALIA



www.tig.org.au/ihsg-2025

PREMIER PARTNER

SUPPORTED BY



Tasmanian
Government

SPONSORS



AgriFutures[®]
Pasture Seeds



PARTNERS



DLF
Seeds



BARENBRUG

**BUSINESS
EVENTS
TASMANIA**

SUPPORTERS

AGF Seeds

Australian Seed Federation

Tasmanian Drought Resilience Adoption and Innovation Hub