

# Measuring action for biodiversity – development of a spatial platform

Frederik Forsberg (SEGES Innovation)

24-01-2024

STØTTET AF  
Promilleafgiftsfonden for landbrug

SEGES  
INNOVATION

# Agenda

## 1. Project presentation:

- Objective
- Overview
- Methodology

## 2. Current status

## 3. Potential and internationalization

# Project objective

The overall objective is to create a tool that landowners can utilize to quantify the conservation value of their actions and plan future management.



Planned development

Previous

Measure	Relative contribution to your score (%)	Economic effect (thousands/year)
Veteran trees (4)	2,75	0
Extensively grazed m. (23 ha)	33	86
Grassfield (5 ha)	0,13	1,45
Lake (2 ha)	9	0,4
Hedge row (320m)	17	0
Primary forest (1,5 ha)	38	4
Wheat field (165 ha)	0,12	3,42
...		
<b>Total BIOPLAN score (area weighted average)</b>	<b>12</b>	

New

Changes	Relative change from original score	Economic effect (thousands/year)
Veteran trees (4)	0	0
Extensively grazed m. (+10 ha)	12	30
Grassfield (0 ha)	0	0
Lake (+0,5 ha)	2,2	0,12
Hedge row (+50 m)	1,5	0
Primary forest (+5 ha)	12,8	1,2
Wheat field (-5 ha)	0,01	8
Bufferzone	5	5
Stonepile (0,1 ha)	0,2	0,04
<b>Total (relative change)</b>	<b>33,69</b>	<b>15,44</b>

Appendix (documentation)

Economical effect



Total score

Summarization

Measure	Relative contribution to your score (%)	Economic effect (thousands/year)
Veteran trees (4)	2,75	0
Extensively grazed m. (23 ha)	33	86
Grassfield (5 ha)	0,13	1,45
Lake (2 ha)	9	0,4
Hedge row (320m)	17	0
Primary forest (1,5 ha)	38	4
Wheat field (165 ha)	0,12	3,42
<b>Total BIOPLAN score (area weighted average)</b>	<b>12</b>	

Appendix (documentation)

Economical effect



Total score

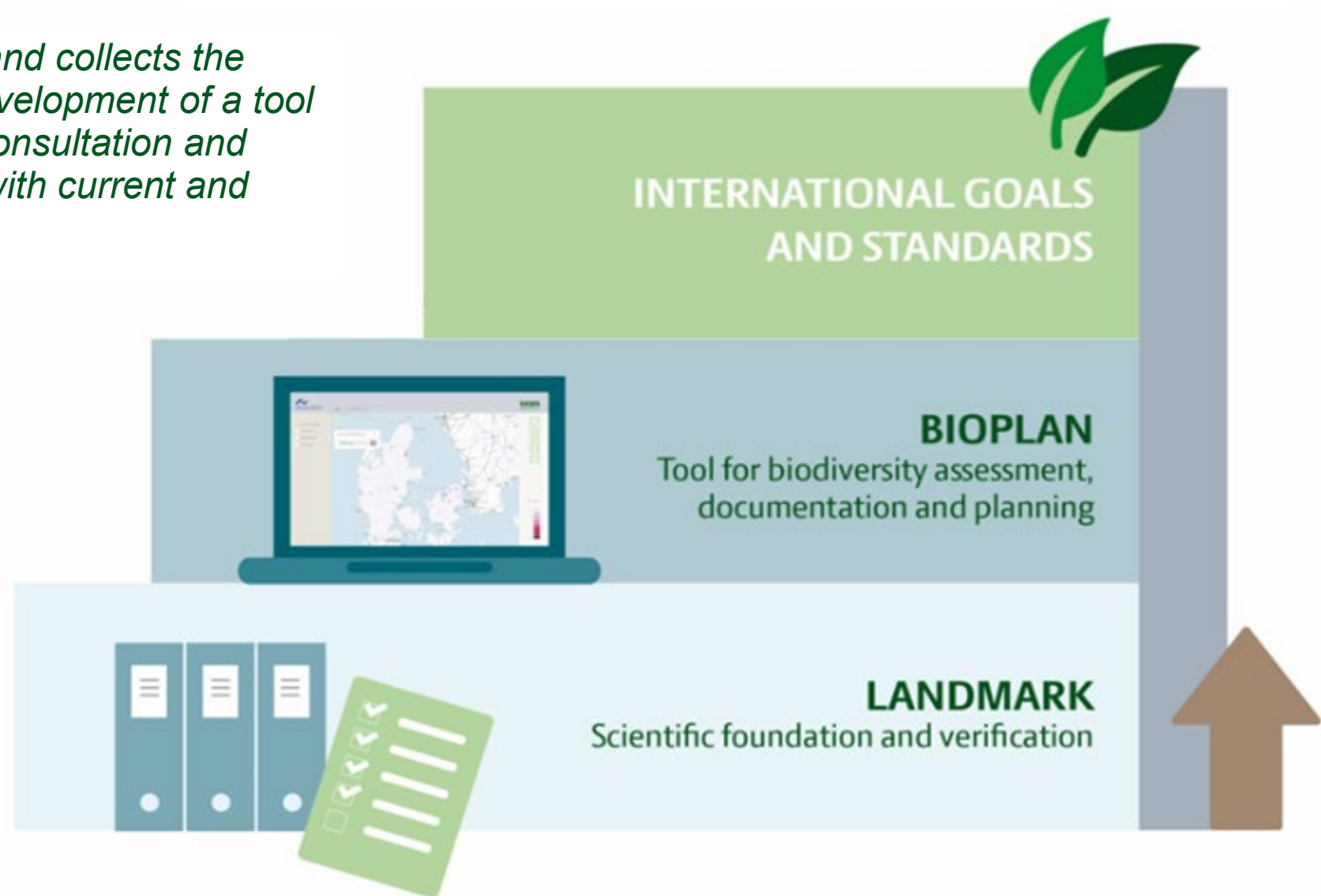


Documentation included in appendix



# Project overview

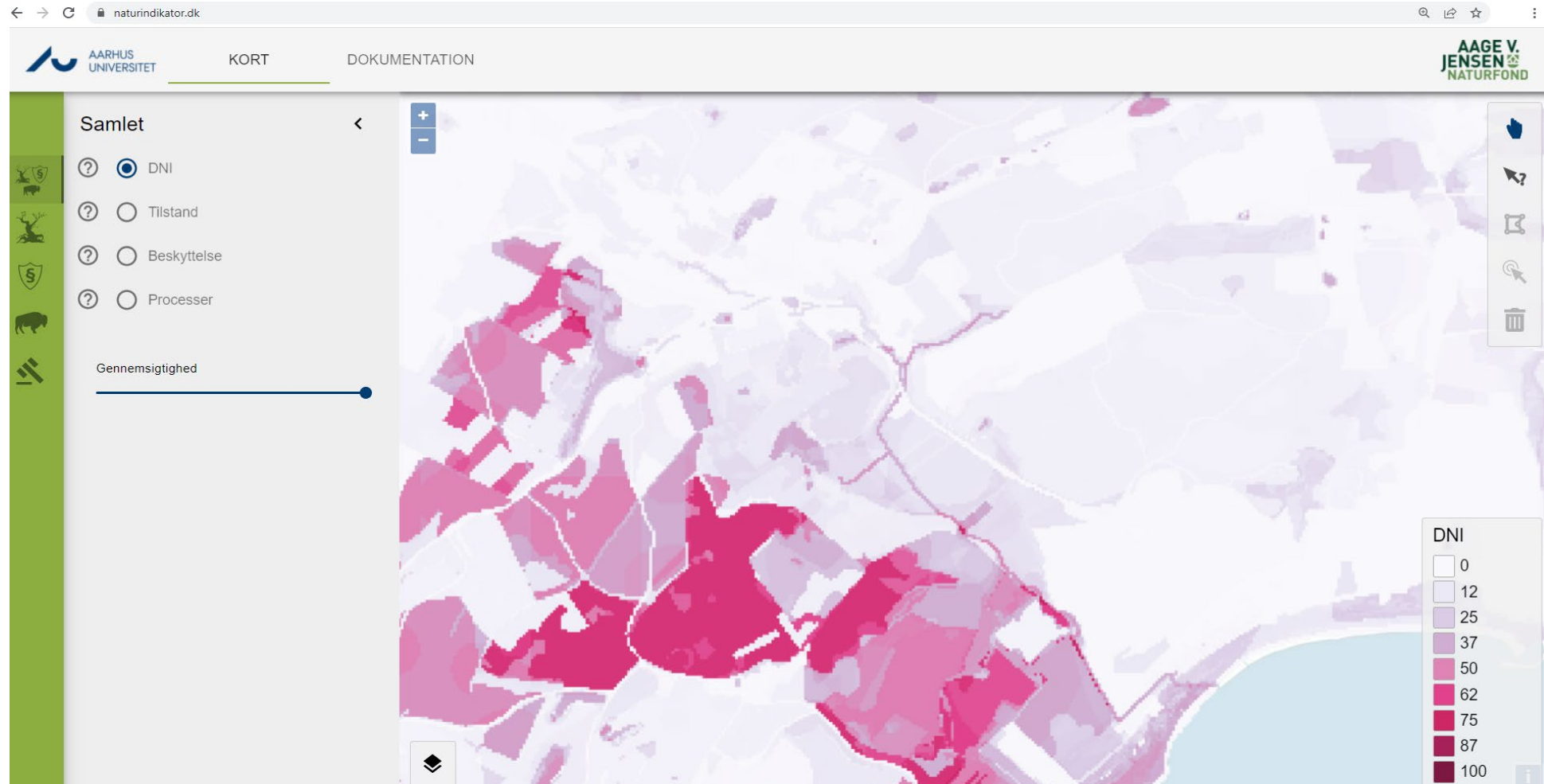
*The LANDMARK project creates and collects the foundational knowledge for the development of a tool (BIOPLAN) that can support the consultation and communication efforts to comply with current and future goals and standards.*





# Project methodology

Project background: [LINK](#)



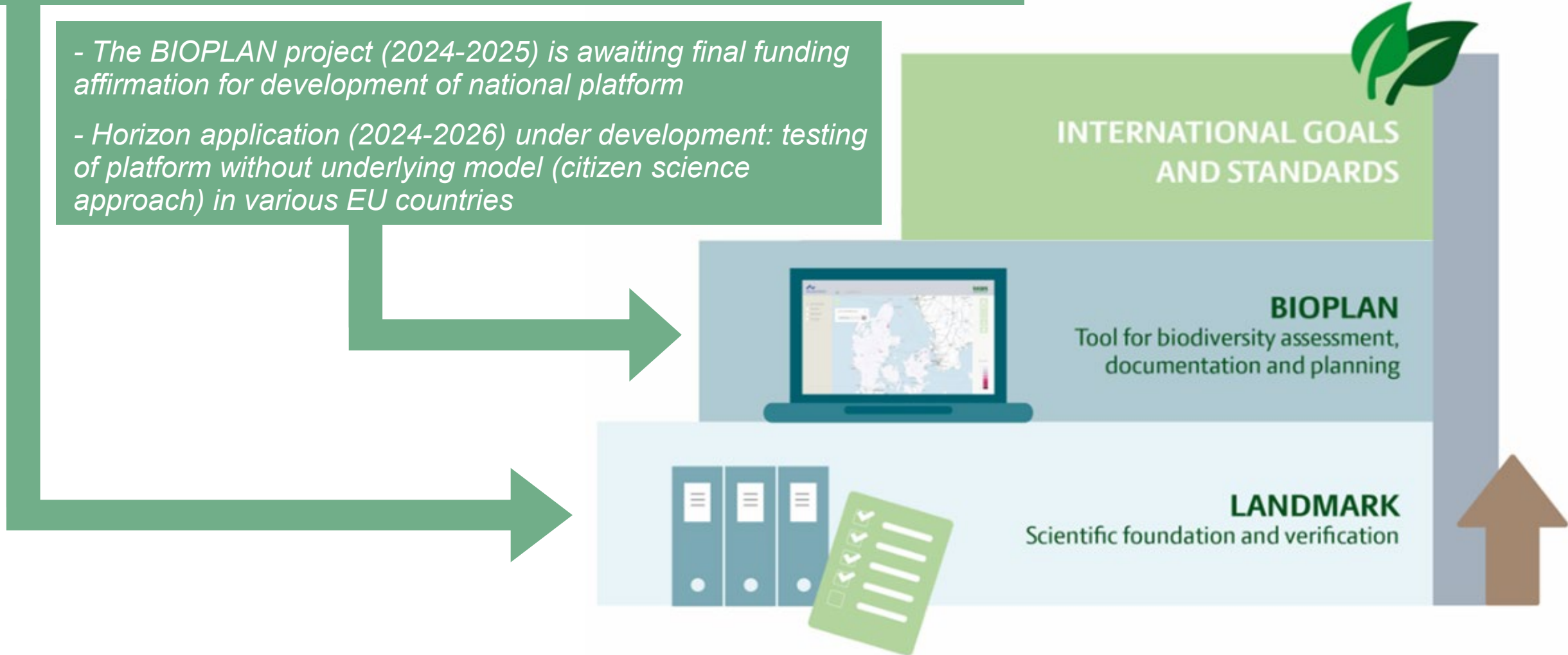


# Current status

- The LANDMARK project (2022-2024): publication of a final report containing the necessary knowledge for developing a functioning platform in Denmark

- The BIOPLAN project (2024-2025) is awaiting final funding affirmation for development of national platform

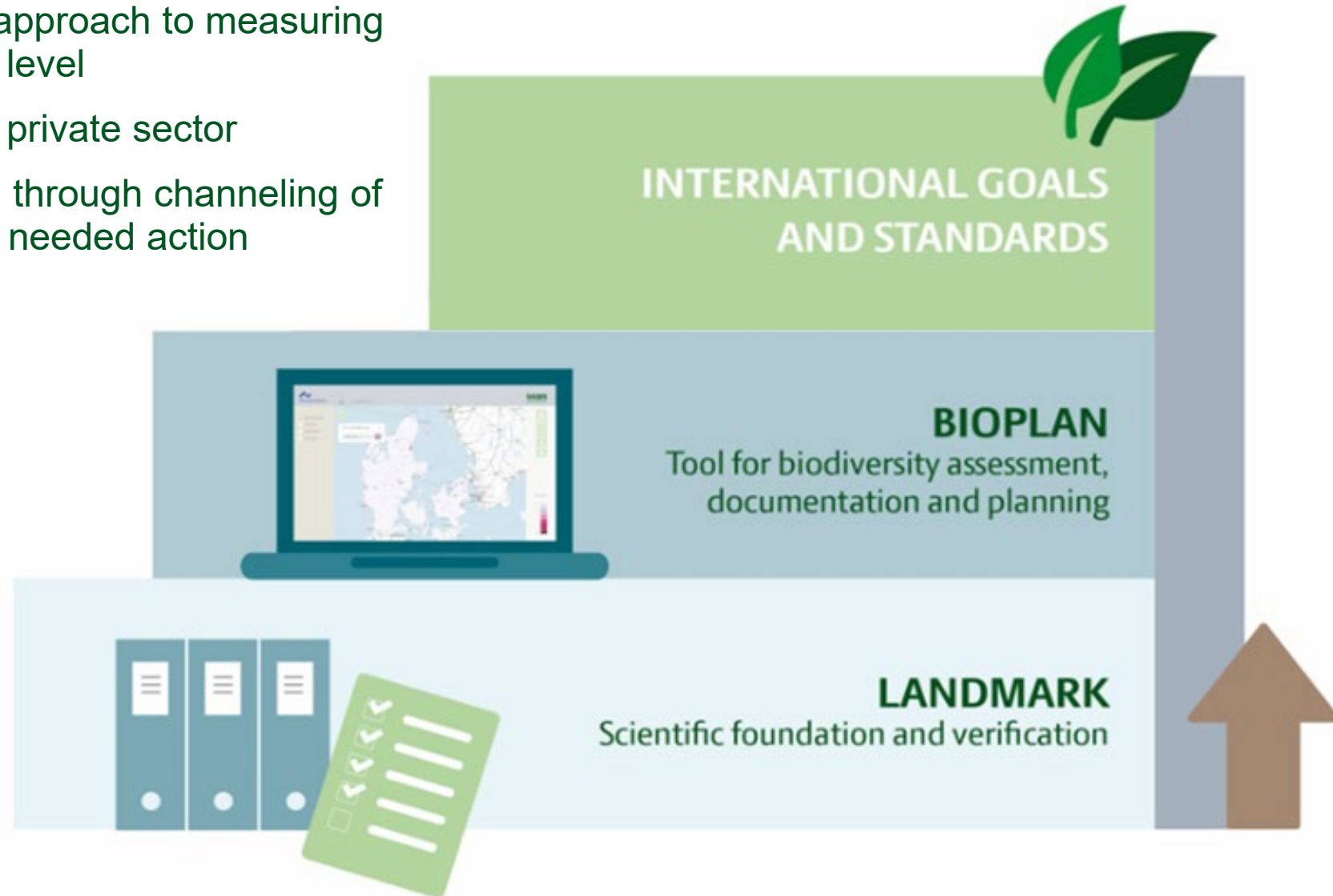
- Horizon application (2024-2026) under development: testing of platform without underlying model (citizen science approach) in various EU countries





# Potential and internationalization

1. Develop a commonly accepted approach to measuring biodiversity impact on a general level
2. Standardize methodology in the private sector
3. Impact biodiversity conservation through channeling of resources towards effective and needed action



# Potential and internationalization

1. Develop a commonly accepted approach to measuring biodiversity impact on a general level
2. Standardize methodology in the private sector
3. Impact biodiversity conservation through channeling of resources towards effective and needed action



**INTERNATIONAL GOALS  
AND STANDARDS**

## The missing piece(-s)

- I. General acceptance of underlying approach in scientific circles
- II. Development of methodology in multiple countries



**BIOPLAN**

Tool for biodiversity assessment,  
documentation and planning



**LANDMARK**

Scientific foundation and verification

+ the project background in  
the Danish Nature Index!



# Please don't hesitate to contact us if you

- ✓ Are interested in developing/establishing a common international approach
- ✓ Have knowledge of project opportunities in the form of partners, funding, network etc.
- ✓ Have any additional input to, or questions about, the project

Frederik Forsberg

Senior consultant

[SEGES Innovation](#)

Department of Nature, Environment and Area management

[fkfg@seges.dk](mailto:fkfg@seges.dk)

[+45 23 11 90 08](tel:+4523119008)